



# AERO WL & WLS

lightweight & versatile



+41 79 137 81 59  
[www.facade-textile.com](http://www.facade-textile.com)



# aero W light

Aero W light and light side are the lightest profiles in our range.

Easy to use, they can be fixed directly on a wall or any other existing structure and allow for the implementation of small and medium sized frames.

Aero W light and light side are the ideal solutions for making textile structures up to 20 m<sup>2</sup>, at a very competitive price. Champions of the budget-friendly arena.

## SMALL & MEDIUM TENSILE PANELS

### ◆ Thermals :

Associated with Serge Ferrari's Frontside View 381 membrane, the textile facade blocks up to 78% of solar heat.

### ◆ Resistance :

Laboratory test results show a breakout resistance at up to 1.77 T ml for Aero W Light, hence its status of go-to solution for entry-level installations, with no compromise on flexibility and reliability.

Incredible facades have been deployed using this system since 2004, in France and internationally. We lost count !

### ◆ Small & Medium Formats :

Aero W light empowers tensile facades without visible reinforcements, as it is fixed on the existing structure.

FTI recommends a maximum surface of 20m<sup>2</sup> per panel, depending on wind exposure.

## A SIMPLE CONSTRUCTIVE SYSTEM

### ◆ Technique :

With only 4 involved elements, including the membrane, you're ready to assemble your tensile panels, quickly and effectively.

FTI's tensioning system does not require any membrane sewing or welding.

From the membrane to the frame, there's only one step !

Our network of specialists will take care of high-frequency welding operations, for large membranes.

We have you covered.

Aero W light can be screwed to all materials

### ◆ Tooling :

Soft-impact Mallet + FTI tightening tool + Basic Tooling.

## A LIGHTWEIGHT EYE-CATCHING TENSILE FACADE

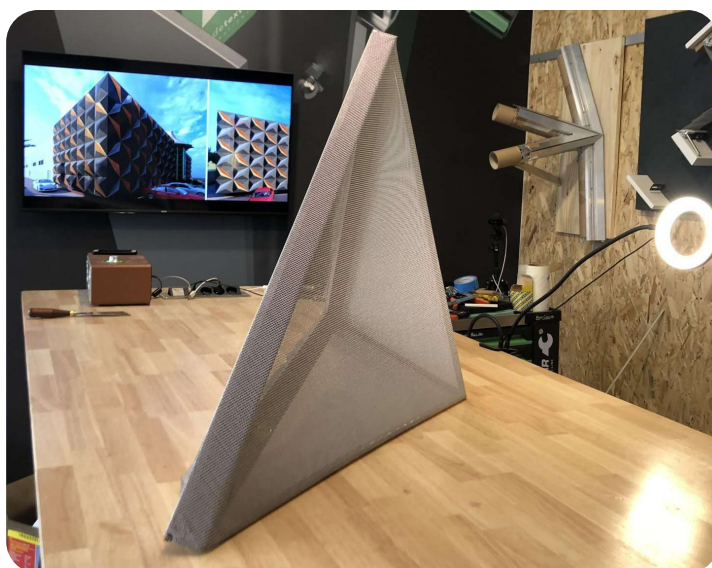
### ◆ Superior Finish :

Aero W light and light side bring easy-to-implement solutions to life, without compromising on aesthetics.

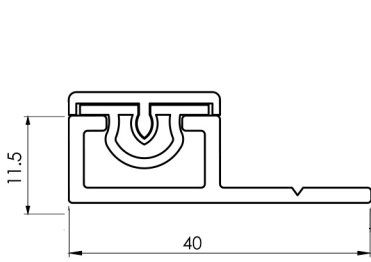
### ◆ Flexible usage :

Combined with steel welding techniques, aero W Light and light side become the backbone of three-dimensional shapes and configurations, limited only by imagination.

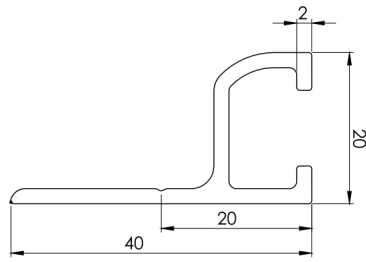
Standard steel sections are locally sourceable and relatively inexpensive, added to the budget-friendly aero W Light family, the combined solution comes at a very competitive price point.



# aero W light

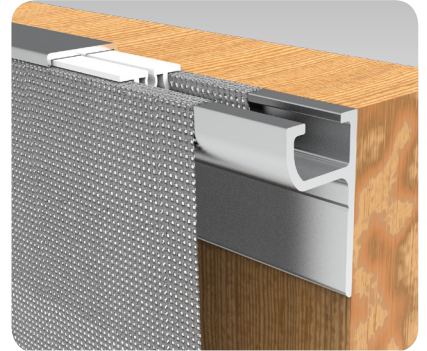
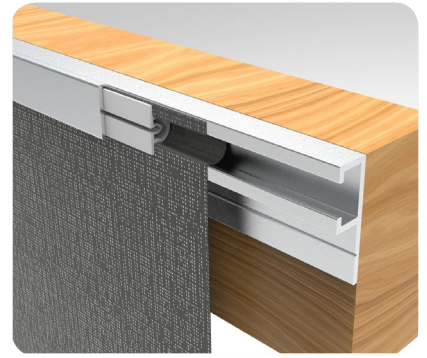


Aero W Light



Aero W Light side

Scale 1:1



## CHARACTERISTICS

<b>Width</b>	40 mm
<b>Thickness</b>	11.50 mm (AWL) / 20mm (AWLS)
<b>Weight</b>	300g/rmt (AWL) / 390g/rmt (AWLS)
<b>Maximum Surface</b>	20 m <sup>2</sup>
<b>Inertia</b>	Lxx = 1788.19 Lxy = -2011.80 Lxz = 0.00 Lyx = 2011.80 Lyy = 17122.30 Lyz = 0.00 Lzx = 0.00 Lzy = 0.00 Lzz = 18910.49
<b>Surface Treatment</b>	Anodized 15µ / natural aluminum / powder-coated
<b>Bars Length</b>	2650 mm or 5300 mm
<b>Sold with</b>	Gripp PVC + Key



**WIND RESISTANCE**  
160 Km/h



**100% RECYCLABLE**



**TEARING 1,7T/lm**



**SURFACE 20 m<sup>2</sup>/frame**



**FACADES COVERING**



**PATENTED SYSTEM**



**BENDABLE PROFILE**

